

# Online SPM Analyser

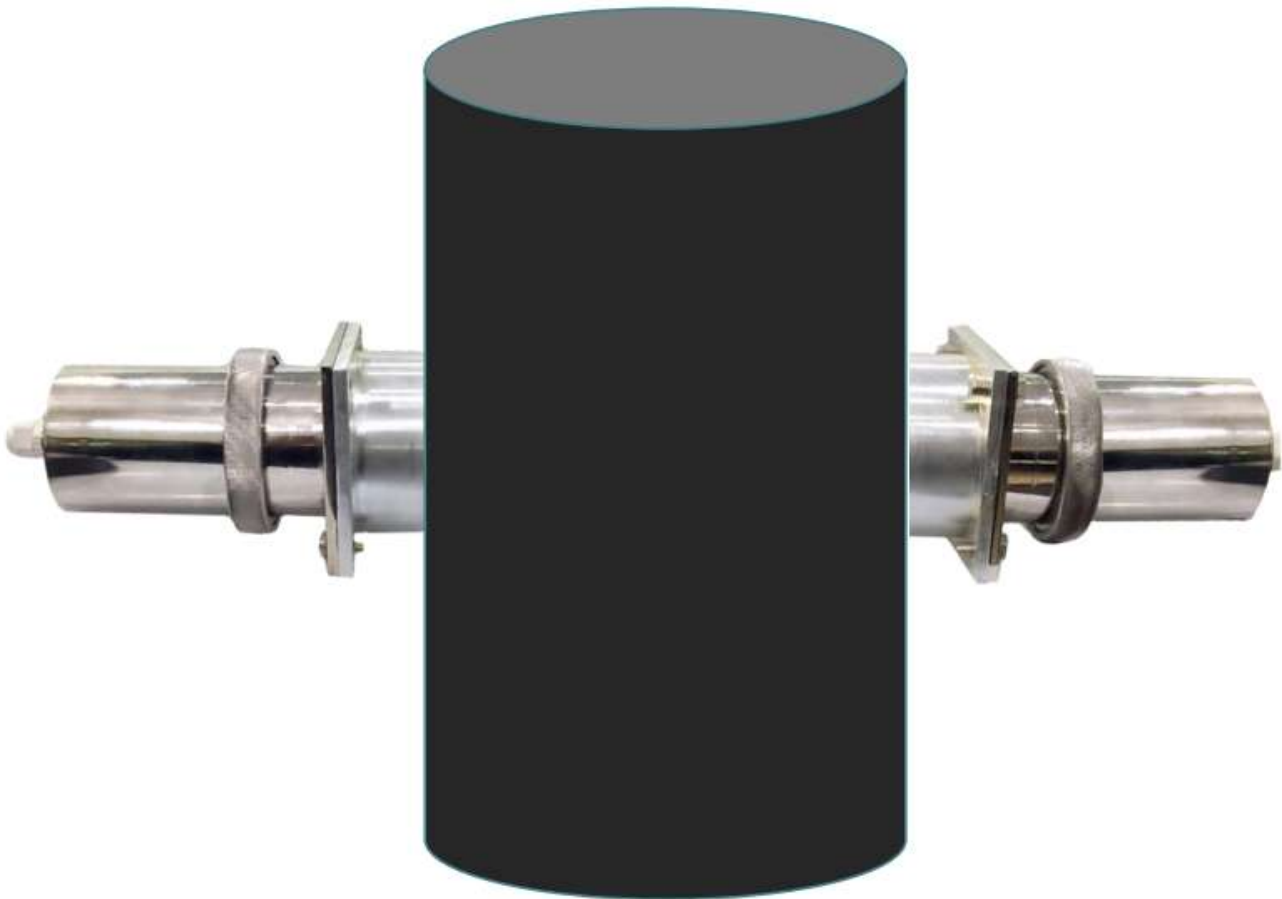


**ALPHA ENGINEERING & SYSTEMS**

[www.alphaengg.in](http://www.alphaengg.in)

## Introduction

The Online SPM Analyzer is a measuring device for dust at low to high concentrations. Basic measuring value is transmittance. Opacity and extinction can be calculated and displayed as well as the dust concentration after gravimetric calibration. The device has an integrated contamination check..



## Features

1. On-line Continuous monitoring of SPM for various emission sources.
2. Combined techniques ,adaptive stabilization, dynamic adaptive phase-lock amplification
3. Very low zero drift ,long inter calibration duration.
4. compact ,easy to install, anti-lightning ,high adaptability, low cost and less maintenance.
5. E&E based design and development of cloud server connectivity modem.

## Fields of application

- Emission monitoring of power stations and waste incineration plants
- Monitoring of filter plants
- Monitoring of dust loads in factory workshops
- Process control of ventilation plants and exhaust systems

## Technical Specification

| Types                       | Details  |
|-----------------------------|--|
| Measurement principles      | Transmittance measurement  |
| Measuring ranges:           | Extinction: 0 ... 0.1/0 ... 2 Opacity: 0 ... 20 %/0 ... 100 % Relative opacity: 0 ... 20 %/0 ... 100 % Dust concentration: 0 ... 200 mg/m <sup>3</sup> /0 ... 10,000 mg/m <sup>3</sup> Transmittance: 100 ... 80 %/100 ... 0 % |
| Process temperature:        | -40 ... +600 °C  |
| Performance tested measured | Dust concentration   |
| Process pressure:           | With external purge air unit: -50 ... 30 hPa<br>With control unit MCU-P: -50 ... 2 hPa   |
| Duct diameter:              | non-condensing Duct diameter: 0.5 ... 2.5 m 2 ... 5 m 4 ... 12 m   |
| Electrical safety:          | CE   |
| Operating Humidity          | 100  |
| Gas Temperature             | +600   |