

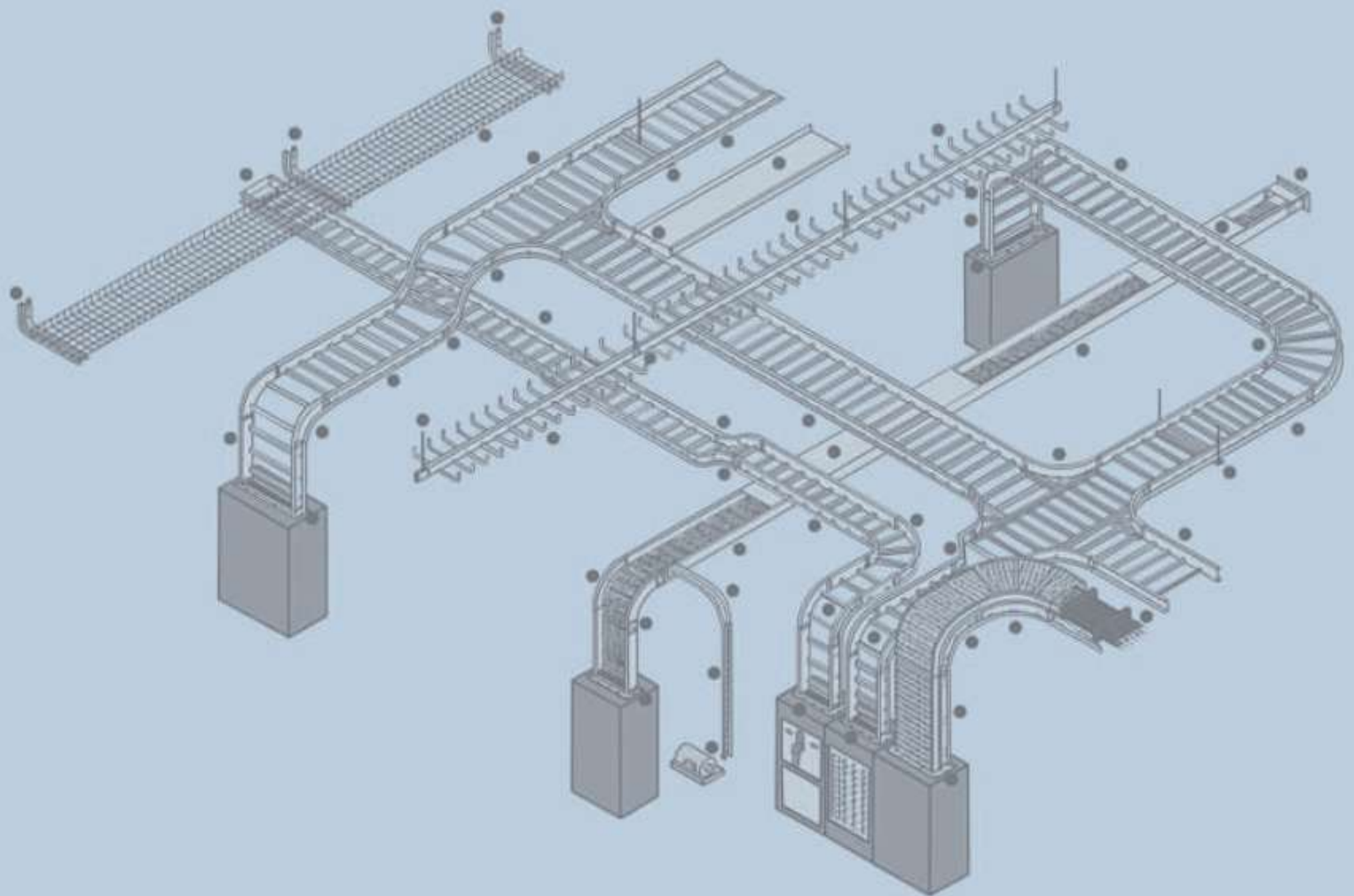
ALPHA (AES)

CABLE MANAGEMENT SYSTEMS

Since 1986

- Cable Trays
- Cable Tray Accessories
- Cable race ways
- Electrical Junction Boxes

An ISO 9001:2008 certified company

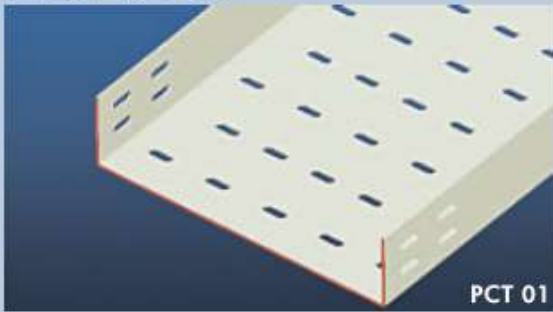


Perforated Cable Trays

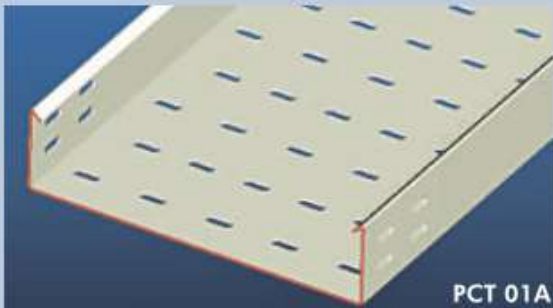
The perforated category comes in widths ranging from 50 mm to 1000 mm. They have the capacity for standard support span of 2,500 mm. These perforated cable trays are specially engineered making use of quality **HR Sheets, Stainless Steel Sheets and pre galvanized Sheets** with specific thickness and flange heights. Some of its important specifications are given below

Types of folds

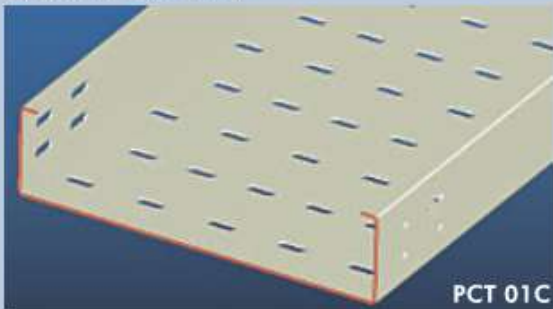
Straight Type Fold



Return Flange Inside Type Fold



C Type Inside Fold



Side height Dimensions

13	25	50	75	100	upto	300
----	----	----	----	-----	------	-----

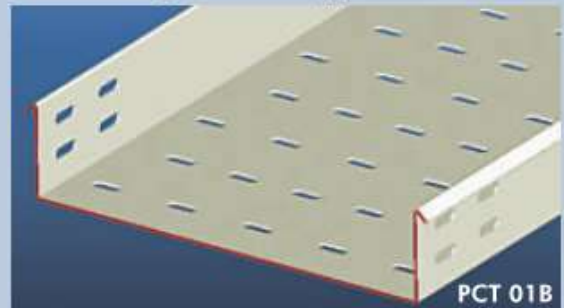
Material Thickness

1.0	1.2	1.6	2.0	2.5		
-----	-----	-----	-----	-----	--	--

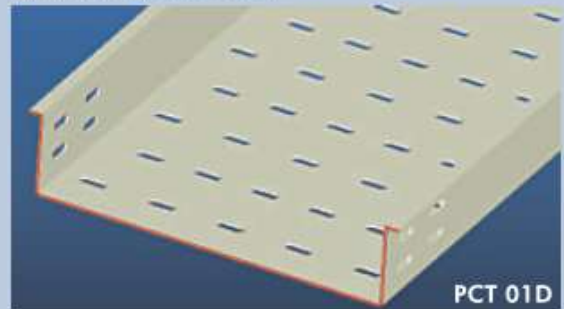
Available Finishes

Stainless steel	SS
Pre-Galvanised steel	PG
Hot dip Galvanised	HG
Electrolytic Galvanised steel	EG
Powder coating	PC
Epoxy / Enamel Coating	PA

Return Flange Outside Type Fold



C Type Outside Fold



Types of Perforation

Staggered Perforation

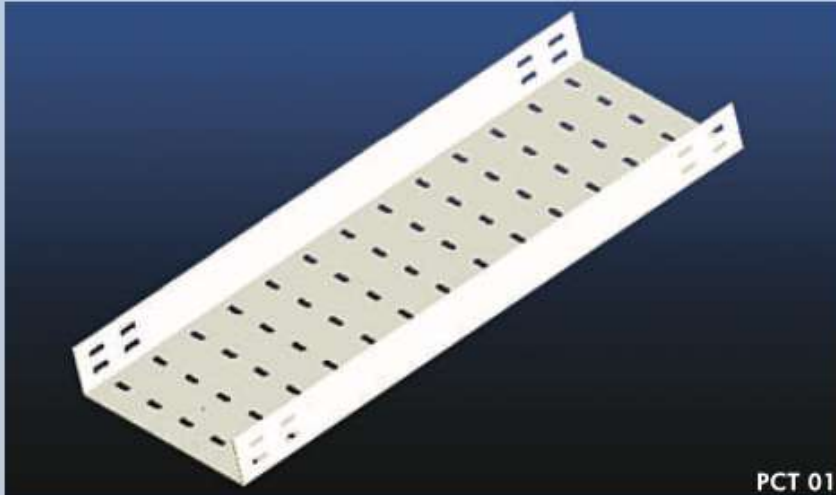


Serial Perforation



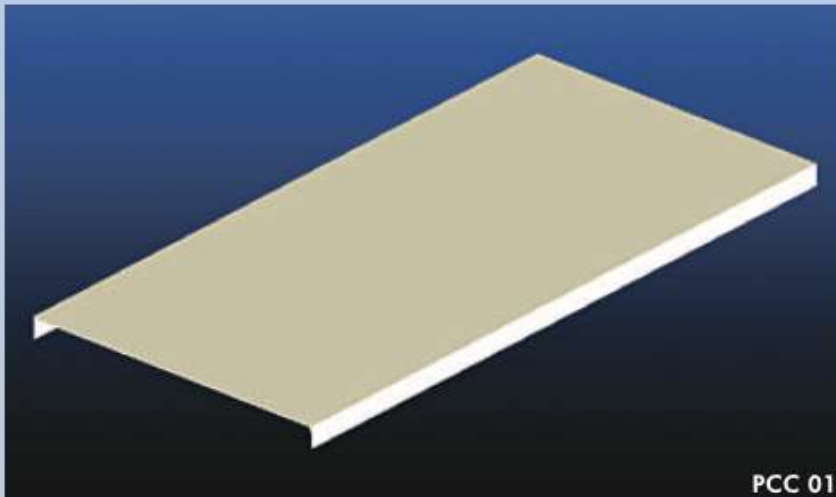
Perforated Cable Trays

Straight Type



PCT 01

Cable Tray Closer / Cover



PCC 01

Ladder Type Cable Tray

The Ladder Type Cable Trays are manufactured in the width from 150 mm to 900 mm : having Height from 50 mm to 150 mm and the Thickness from 1.6 mm to 2.5 mm with all accessories. These trays consists of two longitudinal side rails connected by individual transverse members.



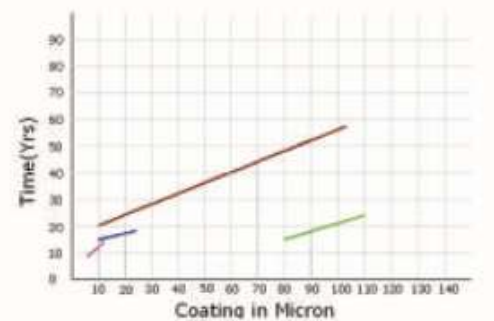
LCT 01

Thickness Vs Width Standards

For thk 1.0 mm Widths are	For thk 1.2mm Widths are	For thk 1.6 mm Widths are	For thk 2.0 mm Widths are
50	50	50	50
75	75	75	75
100	100	100	100
125	125	125	125
150	150	150	150
200	200	200	200
225	250	250	250
	300	300	300
	350	350	350
	400	400	400
	450	450	450
		500	500
		550	550
		600	600
		650	650
			700
			750
			800
			850
			900
			950
			1000

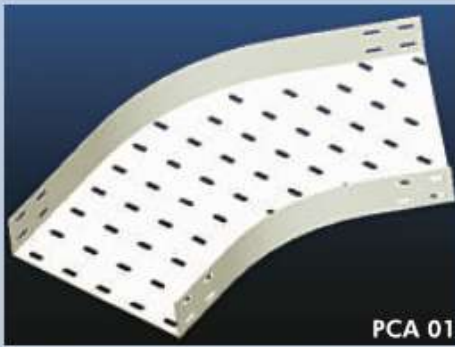
The above are standard thickness, can make other thickness also as per customer drawings.

Service duration chart for all coatings in an Industrial Environment.



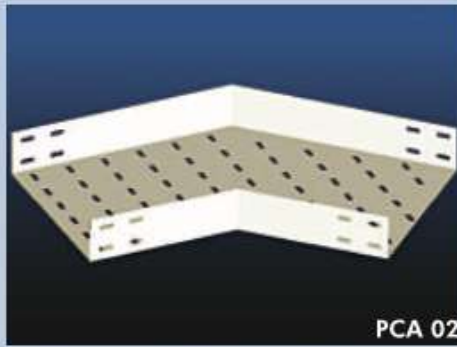
Legend:
 Hot dip galvanised (Red line)
 Zinc Coating (Blue line)
 Powder Coating (Green line)
 GI Coating (Pink line)

Cable Tray accessories



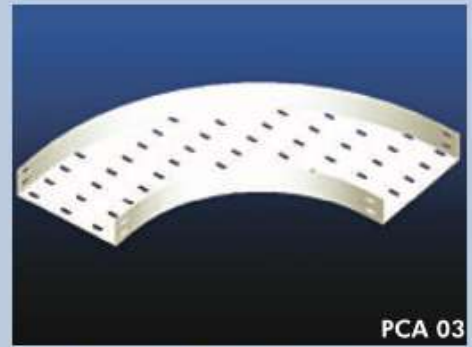
PCA 01

Curved Bend 45 degree



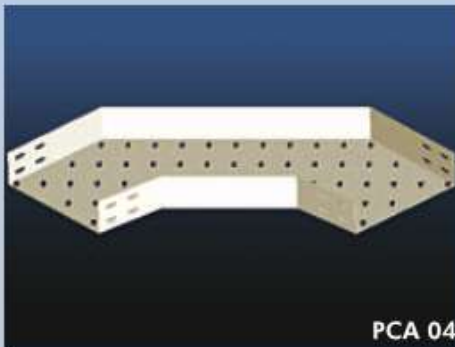
PCA 02

Cornered Bend 45 degree



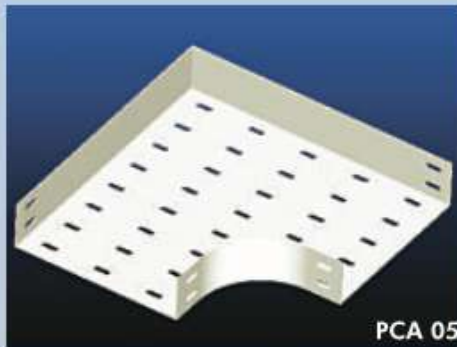
PCA 03

Curved Bend 90 degree



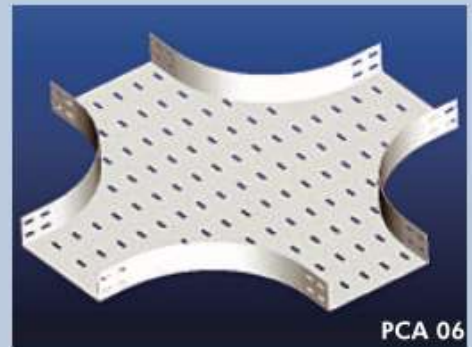
PCA 04

Cornered Bend 90 degree



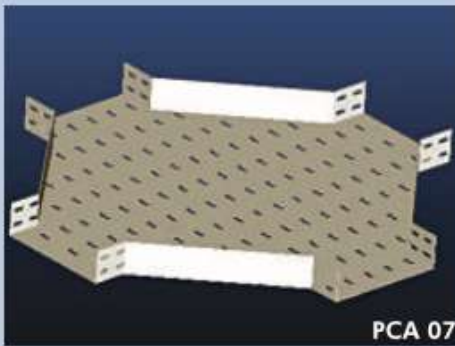
PCA 05

Short Bend 90 degree



PCA 06

Intersection Curved



PCA 07

Intersection Cornered



PCA 08

90 Degree Outside Raiser
Cornered



PCA 09

90 Degree Outside Raiser
Curved



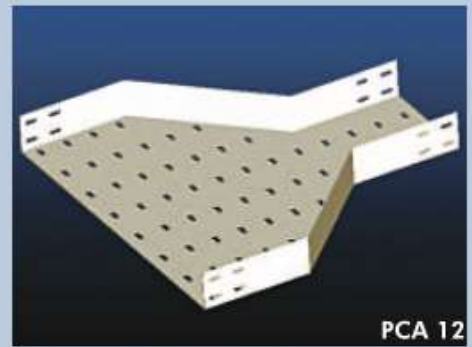
PCA 10

90 Degree Inside Raiser
Cornered



PCA 11

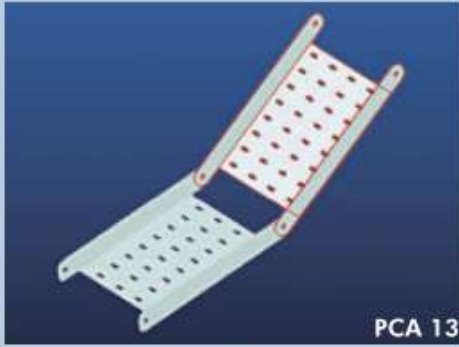
90 Degree Inside Raiser
Curved



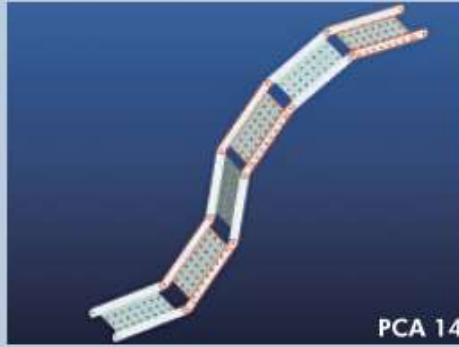
PCA 12

Reducer Centre

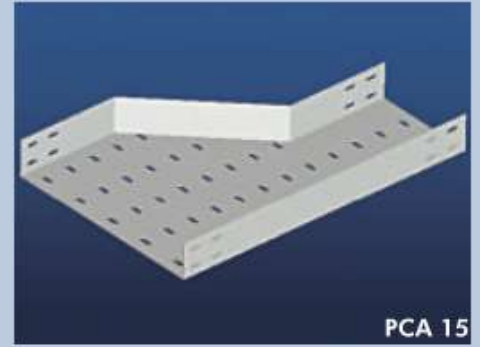
Cable Tray Accessories



Adjustable Raiser



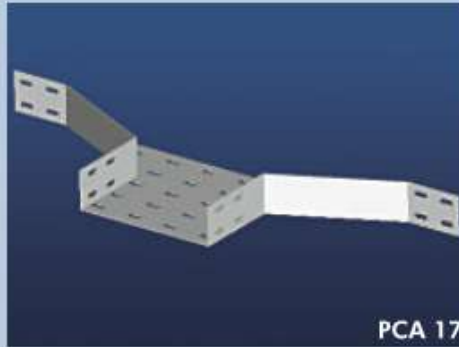
Custom Raiser



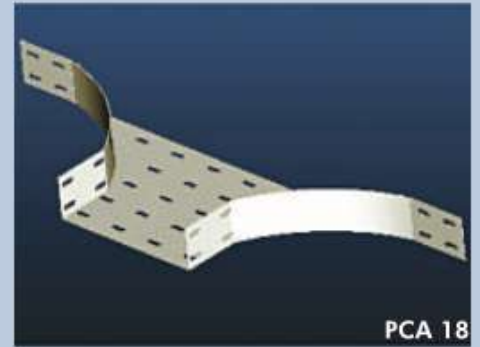
Reducer Left Side



Reducer Right Side



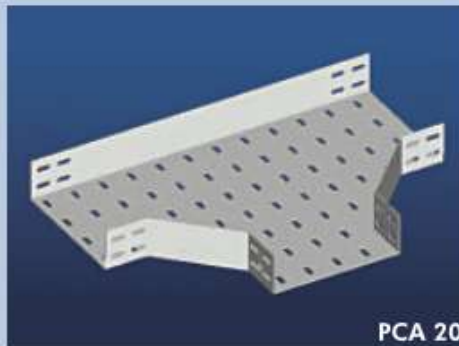
Add on Cornered



Add on Curved



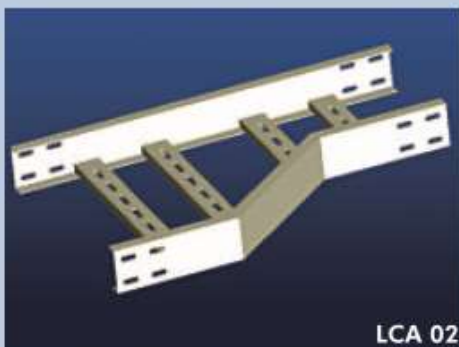
Tee Curved



Tee Cornered



Ladder Type Bend



Ladder Type Reducer



Ladder Type 90 Degree
Inside Raiser

Design Factor to Consider:

Consideration should be given to the following factors when undertaking the design of a cable tray run and a support system, although some of these (ex: wind loads) may not be relevant to every installation

- * Distributed loads eg: Cables, pipes
- * Point loads
- * Thermal expansion
- * Wind and external force
- * Spacing of supports
- * safety factor
- * Deflection